

Panasonic Security System Configuration Tool (PSSCT)

Operating Instructions

Before attempting to connect or operate this product, please read these instructions carefully and save this manual for future use.

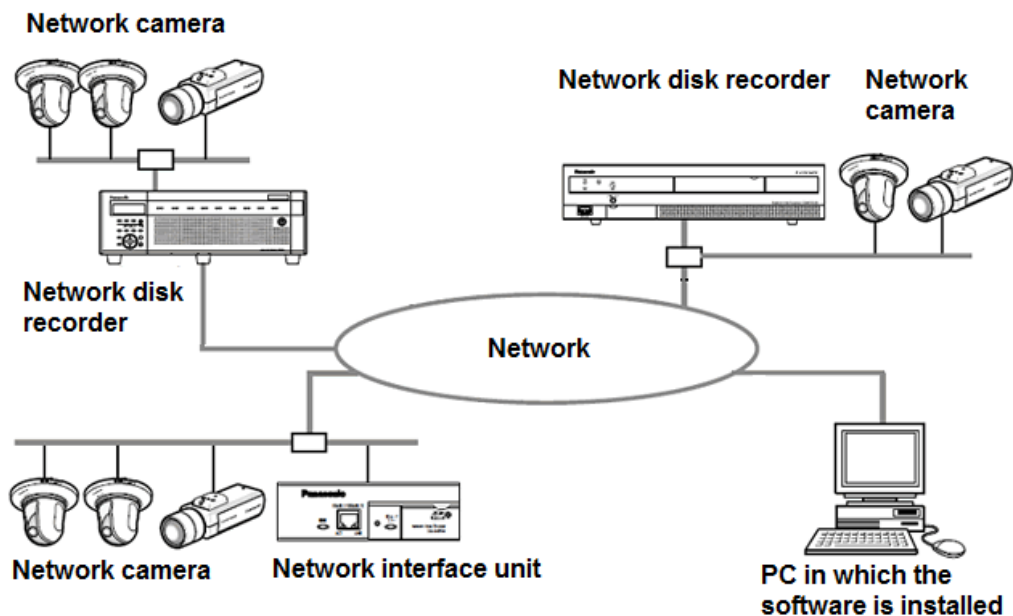
No model number suffix is shown in this Operating Instructions.

Preface

Panasonic Security System Configuration Tool (PSSCT) is the software that is designed to configure the settings of network disk recorders, network interface units (encoders) and network cameras using a PC via a network.

Refer to the provided "Available function list for each compatible device" (PDF file) about the compatible devices.

System configuration diagram



About these operating instructions

These operating instructions provide instructions of how to install this software and of how to configure the settings of each device using this software.

The descriptions in the following pages are based on the assumption that Microsoft® Windows® 7 Professional runs on a PC.

Operation windows may not be the same as those appearing on the pages when a different OS is used or different settings are applied.

When using other OS, refer to the operating instructions of the respective OS.

System requirements for a PC

It is recommended to install this software on a PC that meets the following system requirements.

Note:

- Microsoft® .NET Framework 4.6 is required to run this software.

.....

OS ^{*1}	Microsoft® Windows® 10 Pro (32-bit) ^{*3} Microsoft® Windows® 10 Pro (64-bit) ^{*2, *3} Microsoft® Windows® 8.1 Pro (32-bit) Microsoft® Windows® 8.1 Pro (64-bit) ^{*2} Microsoft® Windows® 7 Professional SP1 (32-bit) Microsoft® Windows® 7 Professional SP1 (64-bit) ^{*2}
CPU	Intel® Core™ i5 2.5 GHz or faster
Memory	1 GB or more
Required hard disk space	20 MB of disk space is necessary for installation of this software. Microsoft® .NET Framework 4.6 and Microsoft® Visual C++ Redistributable Packages for Visual Studio 2013 are required to run this software. When they are not installed on a PC, additional 4.5 GB of disk space is necessary for installation.
Monitor	1280 x 800 pixels or more 24-bit True color or better
Network interface	10/100 Mbps Network interface card must be installed ^{*4} .

- *1: This software is designed based on the default style or the font size of Microsoft® Windows® 7, Microsoft® Windows® 8.1 and Microsoft® Windows® 10. It is not recommended to change the display style or the font size smaller-100% from the default. When the display style or the font size is changed from the default, it may be possible that the layout of this software collapses. If this software is not displayed correctly, change the font size to Small-100%.
- *2: The network settings on the PC must meet those of the network environment where the PC is connected.
- *3: Supports “Desktop Mode” only.
- *4: Operates in WOW64 (32-bit mode).

Important:

- This software must be installed or started by an administrator of the PC. Otherwise, any problems will not be covered by the warranty.
- Do not use other applications, especially heavy load types, while this software is running. Otherwise, the CPU overload and the shortage of resources will cause malfunction and insufficient performance. In order to avoid the conflict, please do not launch at the same time with the following software.
EasyIpSetup (included Camera’s CD-ROM)
WV-ASM100, WV-ASM200, WV-ASM300
- Enter 1-byte alphanumeric characters for user names. If 2-byte characters are included, installation may fail.

Trademarks and registered trademarks

- Adobe and Reader are either registered trademarks or trademarks of Adobe Systems Incorporated in the United States and/or other countries.
- Microsoft, Windows, Internet Explorer, ActiveX and DirectX are either registered trademarks or trademarks of Microsoft Corporation in the United States and other countries.
- Intel and Core i5 are trademarks or registered trademarks of Intel Corporation or its subsidiaries in the United States and other countries.
- Other names of companies and products contained in these operating instructions may be trademarks or registered trademarks of their respective owners.

Abbreviations

- These are descriptions of the basic terms used in these operating instructions.
- Microsoft® Windows® 7 Professional SP1 (32-bit) and Microsoft® Windows® 7 Professional SP1 (64-bit) are described as Windows 7.
- Microsoft® Windows® 8.1 Pro (32-bit) and Microsoft® Windows® 8.1 Pro (64-bit) are described as Windows 8.1.
- Microsoft® Windows® 10 Pro (32-bit) and Microsoft® Windows® 10 Pro (64-bit) are described as Windows 10.

Copyright

- Except for open source software licensed under GPL/LGPL and so on, distributing, copying, disassembling, reverse compiling, reverse engineering, and also exporting in violation of export laws of the software provided with this product, are all expressly prohibited.

Disclaimer of warranty

IN NO EVENT SHALL MATSUSHITA ELECTRIC INDUSTRIAL CO., LTD. BE LIABLE TO ANY PARTY OR ANY PERSON, EXCEPT FOR REPLACEMENT OR REASONABLE MAINTENANCE OF THE PRODUCT, FOR THE CASES, INCLUDING BUT NOT LIMITED TO BELOW:

- (1) ANY DAMAGE AND LOSS, INCLUDING WITHOUT LIMITATION, DIRECT OR INDIRECT, SPECIAL, CONSEQUENTIAL OR EXEMPLARY, ARISING OUT OF OR RELATING TO THE PRODUCT;
- (2) PERSONAL INJURY OR ANY DAMAGE CAUSED BY INAPPROPRIATE USE OR NEGLIGENT OPERATION OF THE USER;
- (3) UNAUTHORIZED DISASSEMBLE, REPAIR OR MODIFICATION OF THE PRODUCT BY THE USER;
- (4) ANY PROBLEM, CONSEQUENTIAL INCONVENIENCE, OR LOSS OR DAMAGE, ARISING OUT OF THE SYSTEM COMBINED BY THE DEVICES OF THIRD PARTY;

Open Source Software

This product contains open source software as follows.

Software name	Copyright	License
System.Data.SQLite	System.Data.SQLite	MS-PL

The full text of the corresponding license terms is below.

Microsoft Public License (MS-PL)

This license governs use of the accompanying software. If you use the software, you accept this license. If you do not accept the license, do not use the software.

1. Definitions

The terms "reproduce," "reproduction," "derivative works," and "distribution" have the same meaning here as under U.S. copyright law.

A "contribution" is the original software, or any additions or changes to the software.

A "contributor" is any person that distributes its contribution under this license.

"Licensed patents" are a contributor's patent claims that read directly on its contribution.

2. Grant of Rights

(A) Copyright Grant- Subject to the terms of this license, including the license conditions and limitations in section 3, each contributor grants you a non-exclusive, worldwide, royalty-free copyright license to reproduce its contribution, prepare derivative works of its contribution, and distribute its contribution or any derivative works that you create.

(B) Patent Grant- Subject to the terms of this license, including the license conditions and limitations in section 3, each contributor grants you a non-exclusive, worldwide, royalty-free license under its licensed patents to make, have made, use, sell, offer for sale, import, and/or otherwise dispose of its contribution in the software or derivative works of the contribution in the software.

3. Conditions and Limitations

(A) No Trademark License- This license does not grant you rights to use any contributors' name, logo, or trademarks.

(B) If you bring a patent claim against any contributor over patents that you claim are infringed by the software, your patent license from such contributor to the software ends automatically.

(C) If you distribute any portion of the software, you must retain all copyright, patent, trademark, and attribution notices that are present in the software.

(D) If you distribute any portion of the software in source code form, you may do so only under this license by including a complete copy of this license with your distribution. If you distribute any portion of the software in compiled or object code form, you may only do so under a license that complies with this license.

(E) The software is licensed "as-is." You bear the risk of using it. The contributors give no express warranties, guarantees or conditions. You may have additional consumer rights under your local laws which this license cannot change. To the extent permitted under your local laws, the contributors exclude the implied warranties of merchantability, fitness for a particular purpose and non-infringement.

Network Security

As you will use this product connected to a network, your attention is called to the following security risks.

- (1) Leakage or theft of information through this product
- (2) Use of this product for illegal operations by persons with malicious intent
- (3) Interference with or stoppage of this product by persons with malicious intent

It is your responsibility to take precautions such as those described below to protect yourself against the above network security risks.

- Use this product in a network secured by a firewall, etc.
- If this product is connected to a network that includes PCs, make sure that the system is not infected by computer viruses or other malicious entities (using a regularly upgraded anti-virus program, anti-spyware program, etc.).
- Protect your network against unauthorized access by restricting users to those who log in with an authorized user name and password.
- Apply measures such as user authentication to protect your network against leakage or theft of information, including image data, authentication information (user names and passwords), alarm mail information, FTP server information.

Contents

Preface.....	1
System configuration diagram.....	1
About these operating instructions	2
System requirements for a PC.....	2
Trademarks and registered trademarks.....	3
Abbreviations.....	3
Copyright.....	4
Disclaimer of warranty	4
Open Source Software	4
Network Security	5
Contents.....	6
Preparation.....	7
Installation	7
Uninstallation.....	8
Connections.....	8
Launch the software	9
About the top menu.....	10
Description.....	11
Configure Devices.....	11
Option page	15
Configure Recorders.....	16
Recorder Configuration File editor.....	17
Download Configuration Files and Log Files from Devices	18
Option Settings.....	21
Upload Configuration Files to Devices.....	22
Option Settings.....	24
Upgrade Firmware.....	25
Option Settings.....	28
Change Login User	29
Refer to the Manual	30
Other	31
Troubleshooting	31
Cautions when using the software.....	34

Preparation

Installation

Install this software by following the message in the dialog box.

Important:

- Do not edit, delete and move the files copied upon installation. Otherwise, this software may not work correctly.

1 Contact your dealer and download the software onto a PC.

2 Double-click "setup.exe".

The confirmation window will be displayed.

3 Click [OK] button.

Follow the instructions of the wizard to complete the installation.

When starting installation after selecting the standard installation, a new folder will be created and the files of this software will be copied in the created folder.

(The directory path is "C:\Program Files\Panasonic\AdminConsole2" or "C:\Users\User Name\AppData\Local\Apps\Panasonic\AdminConsole2".)

When the installation is completed, the program will be added to the "start" menu.

Uninstallation

Uninstall this software as follows.

- 1 Click the "Programs and Features" icon in "Control Panel".**
The "Programs and Features" window will be displayed.
- 2 Select "Panasonic Security System Configuration Tool (PSSCT2)", and then click [Uninstall] button.**
Uninstall the program by following instructions.

Connections

Connect PCs and devices.

Refer to the operating instructions of each device in use for how to connect them.

Launch the software

Launch this software to configure the device settings after connecting a PC and devices. The following instructions begin from the screen displayed just after the PC is booted.

- 1 **Select "PSSCT" from "start" menu**
("Start" - "All Programs" - "Panasonic" - "Panasonic Security System Configuration Tool (PSSCT2)" - "Panasonic Security System Configuration Tool (PSSCT2)").

This software will be launched, and then the login window will be displayed.

Important:

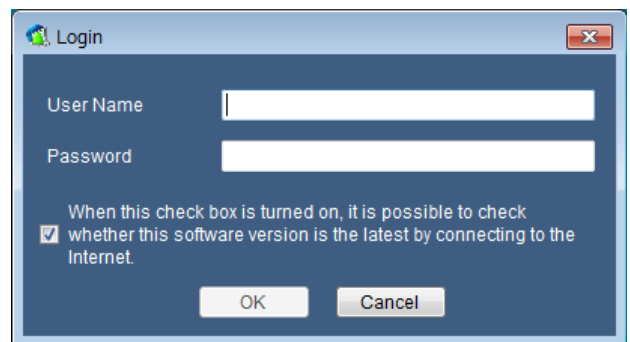
- Do not edit, delete and move the files copied upon installation. Otherwise, this software may not work correctly.

- 2 **Enter registered user name and password.**

The default user name and password are "ADMIN" and "12345" respectively.

Important:

- To ensure the security, change from the default user name and password. It is also recommended to change them periodically.



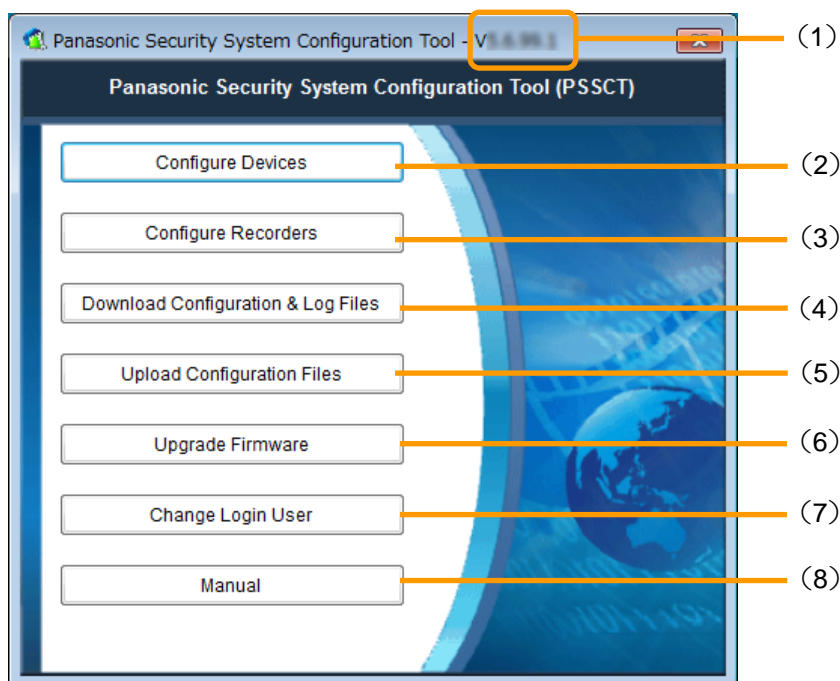
- 3 **Click [OK] button.**

The top page of the software will be displayed. Start operation by selecting each menu item of this page. To quit operation of this software and exit, click [x] button at the top right of the setup page.



About the top menu

The following page will be displayed after launching this software. Click each button to operate the respective functions.



No.	Item	Description
(1)	Version	Version of this software.
(2)	Configure Devices	Assign IP address, Scene Selection Image Quality, Configure Devices and Send a CGI List.
(3)	Configure Recorders	To support creating and/or editing Recorder Configuration File function and converting Recorder Configuration File into text data function.
(4)	Download Configuration & Log Files	Download Configuration Files and Log Files from devices.
(5)	Upload Configuration Files	Upload Configuration Files to target devices.
(6)	Upgrade Firmware	Upgrade firmware of target devices.
(7)	Change Login User	Change the username and password for login this software.
(8)	Manual	This manual will be displayed.

Description

Configure Devices

Important:

- The "Windows Security Alert" window may be displayed when this software is launched. In this case, click the "Unblock" button on the displayed "Windows Security Alert" window.
- For security enhancement, the MAC address and the IP address of the connected device will disappear configuration of the settings will become unavailable when 20 minutes have passed after turning on the power of it.
- Wait for a while until device configuration changes are completed.
- This software may fail to connect the device while the target device is in operation. In this case, please stop the operation of the device and try reconnecting.
- For detailed information of the setting item, please refer to the operating instructions of the each device.
- When saved device list file has been edited by other tools, it may fail to re-read.
- Do not access concurrently to the same device from multiple PCs using this software. Otherwise, device errors may occur.
- When using a firewall (including software), please make sure all of the UDP ports set allowed.

- 1 **Click [Configure Devices] button.**
The selection page will be displayed.

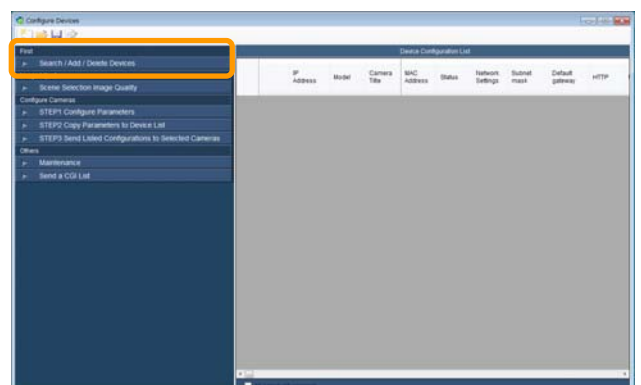


- 2 **<First>Detect / Add / Delete Devices**

"Create Device List" group

[Detect]

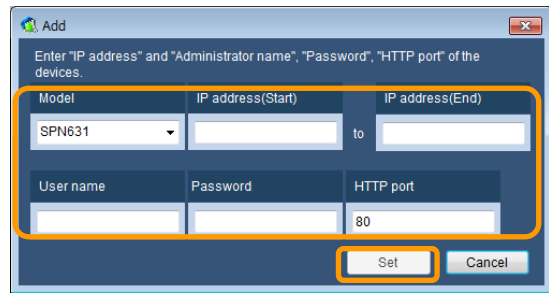
To detect devices on network to update Device Configuration List automatically. If some devices are failed to detect, please extend detect time, and then try again.



[Add]

Set the following items on the menu which appears.

- Model name
- Range of IP address (Start, End)
- User name / Password
(Credential of the login to access devices)
- HTTP port number



[Del]

The registered camera will be deleted from the device configuration list.

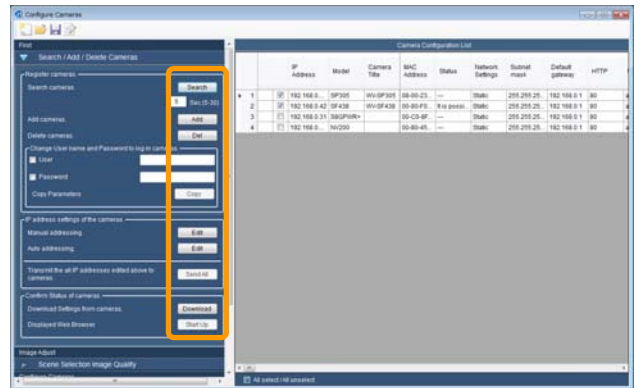
“IP address settings” group

[Edit]

To edit settings of IP addresses menu will be displayed. Configure the Network setting according to your need.

[Send All]

IP addresses edited above procedure will be sent to the devices.



“Confirm Status of devices” group

[Download]

To download current settings from connected devices and update on Device Configuration List.

[Start Up]

To access the checked device via web browser. Alternatively, it is possible to start web browser by right-clicking and select [Browser] menu on target device in the Device Configuration List.

	<input checked="" type="checkbox"/>	IP Address	Model	Camera Title
	<input type="checkbox"/>	192.168.0.11	SP509	
	<input type="checkbox"/>	192.168.0.12	SP306	
3	<input checked="" type="checkbox"/>	192.168.0.13	SW355	

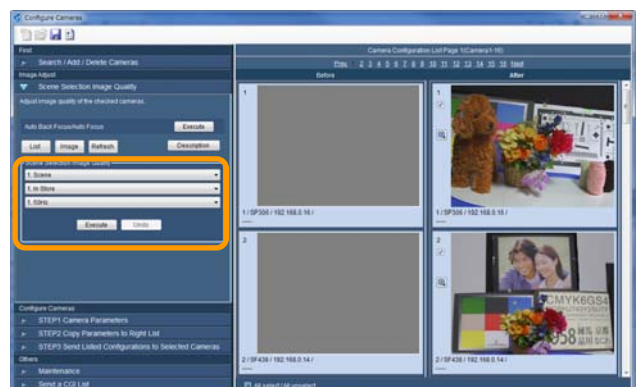
Note:

- In case of device detection failure;
 - (1) Reboot devices.
 - (2) Confirm the power supply, the connection to the network switch and start-up.
 - (3) Click [Search] button again.

3 <Image Adjust>Scene Selection Image Quality

Configure the settings relating to image quality from the following.

- The image of the location where the camera is in use (Scene Selection).
- The image being monitored (Image Adjust).



[Execute] / [Undo]

Selected cameras configuration changes will start.

When configuration changes are completed,

“Before-After (Result)” images will be shown.

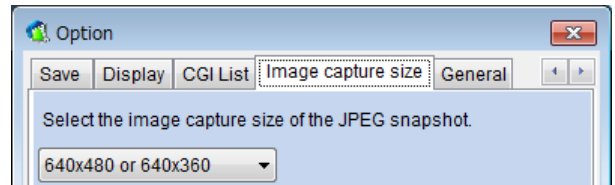
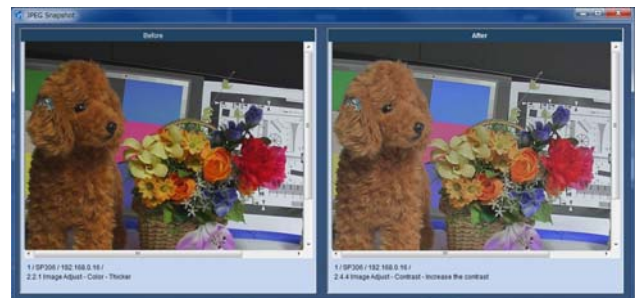
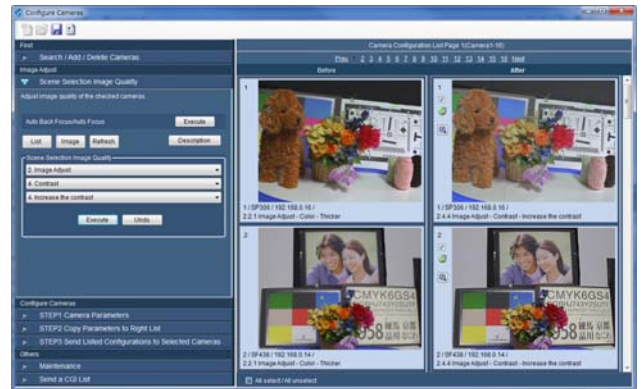
[Magnifying glass] icon

Selected camera images will be enlarged.

Note:

Select the image capture size of the JPEG snapshot in Option Page.

.....

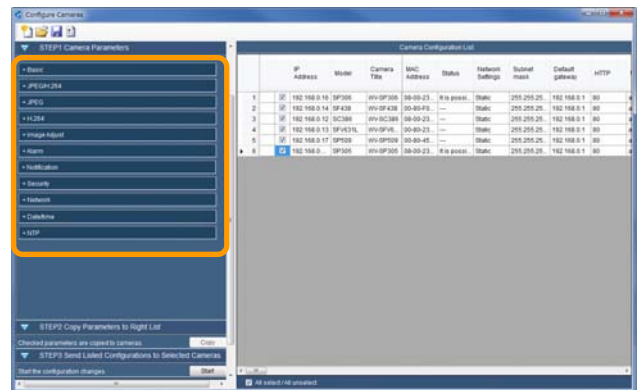


4 [Configure Cameras]STEP1 Configure Parameters.

When these menu labels are clicked, the selected menu will be displayed in this area.

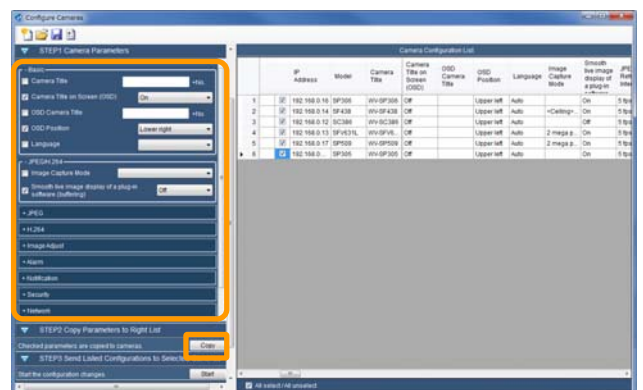
[Configure Cameras]STEP2 Copy Parameters to Device List.

When [Copy] button is clicked, checked parameters are copied to checked cameras on Device Configuration List. Copied parameters shown by bold fonts.



Note:

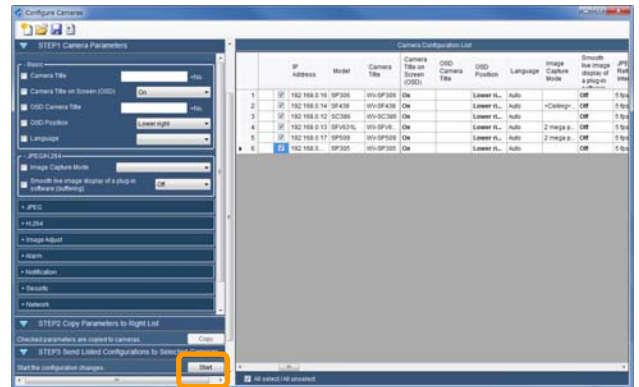
- When failed copy parameters copy failed to the list, display a message window. Correct the items according to the message.
- Refer to the operating instructions of the device in use for information about each setting item.



5 [Configure Cameras] STEP3 Send Listed Configurations to Selected Cameras.

When [Start] button is clicked, selected cameras configuration changes will start. Wait for a while.

When configuration changes are completed, a dialog box will be displayed.

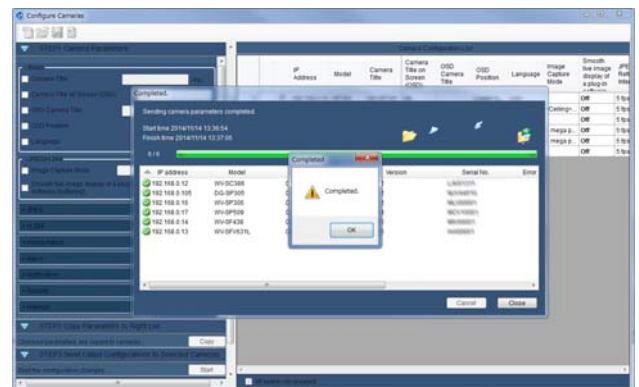


6 Complete the upload.

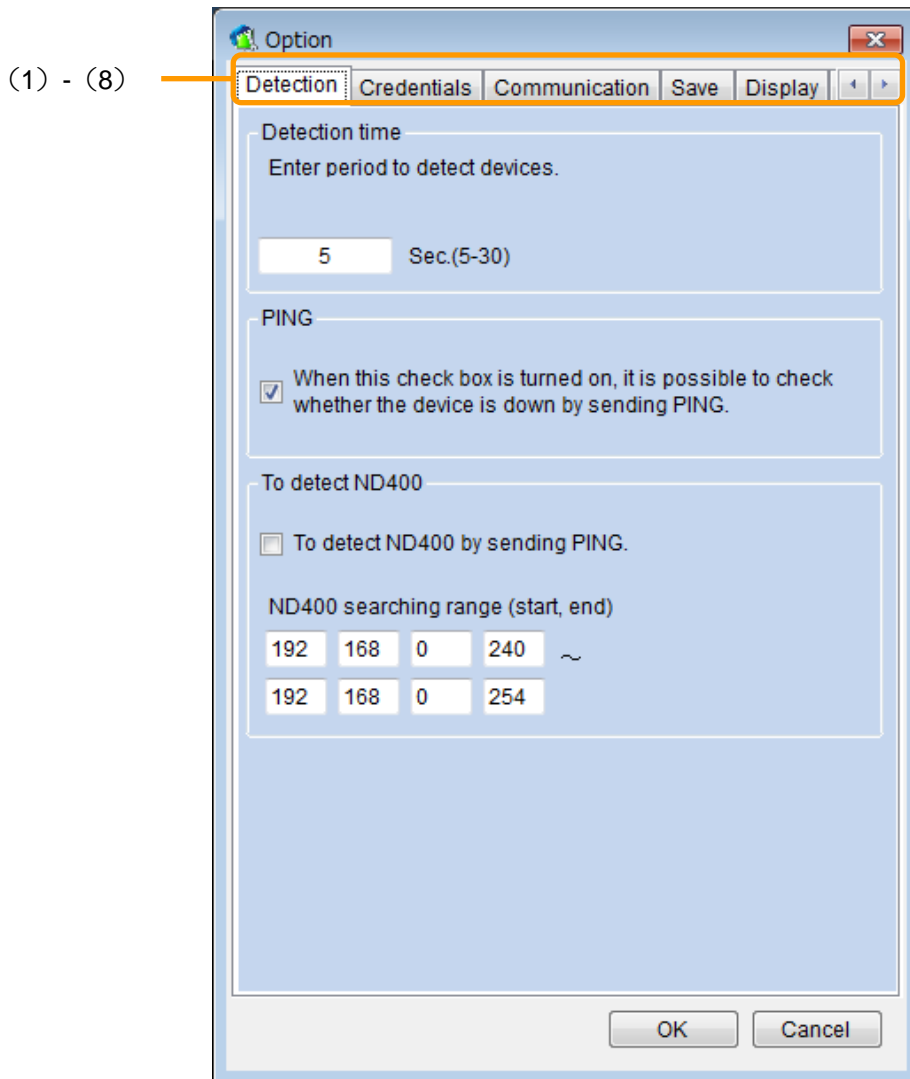
Click [OK] button.

Note:

- Camera configuration files and setup report will be saved automatically. The location will be changed by [Options] menu.
 - The saved settings (Camera Parameters) can be opened by clicking [Open] button.
 - Click [Save] button to save the settings of Camera Parameters.
-



Option page

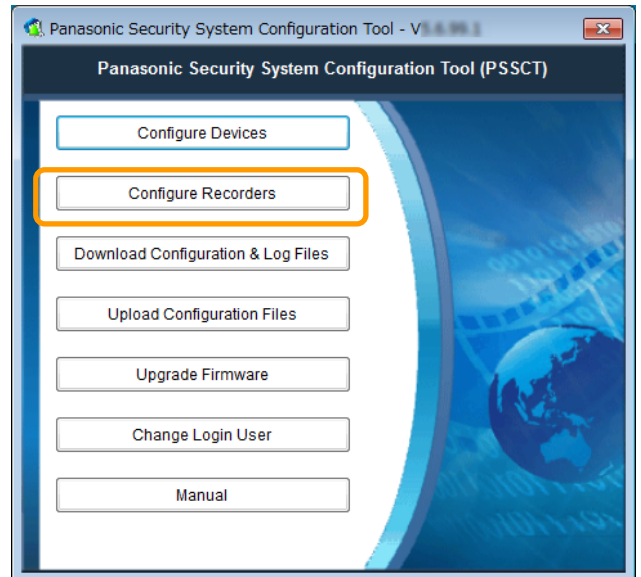


No.	Item	Description
(1)	Detection	<ul style="list-style-type: none"> • Period of "Detection time" to detect devices • Control for "PING before access devices" • Configuration of ND400 detection
(2)	Credentials	Credential of login to each device. (“User name” and “Password” for Administrators of related devices.)
(3)	Communication	<ul style="list-style-type: none"> • Number of Operations In case of failure to communicate devices for the reason of lack of bandwidth, decrease this number. • Network Adapter Selection
(4)	Save	Select a location to save download camera configuration files and change report.
(5)	Display	Select items to display on Camera Configuration List.
(6)	CGI List	Select CGI List.
(7)	Image capture size	Select the image capture size of the JPEG snapshot.
(8)	General	Language Settings. (Settings will be reflected after the next startup.)

Configure Recorders

- 1 **Display the top page, and then click [Configure Recorders].**

The "Configure Recorders" page will be displayed.



- 2 **Choose the function**

- **"Create and / or Edit the Recorder Configuration File"**

Press icon and select the model number and the version of target recorder to launch the offline editing software of the Recorder Configuration File.

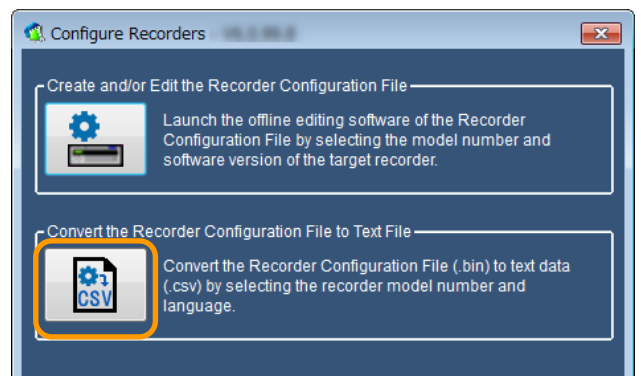
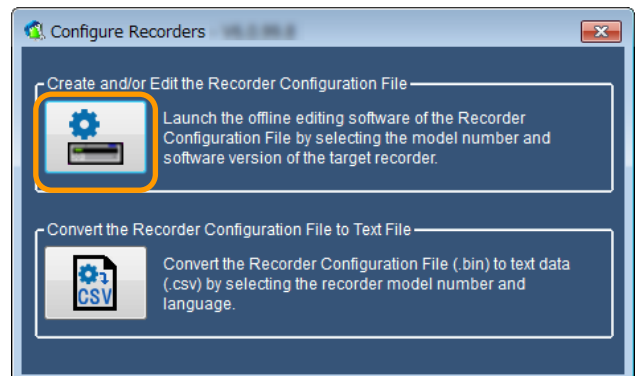
[Supported Recorders]
NX400/NX200, NV300,
ND400, HD716/HD616

Refer to the operating instructions of the device in use for information about each setting item.

- **"Convert the Recorder Configuration File to Text File"**

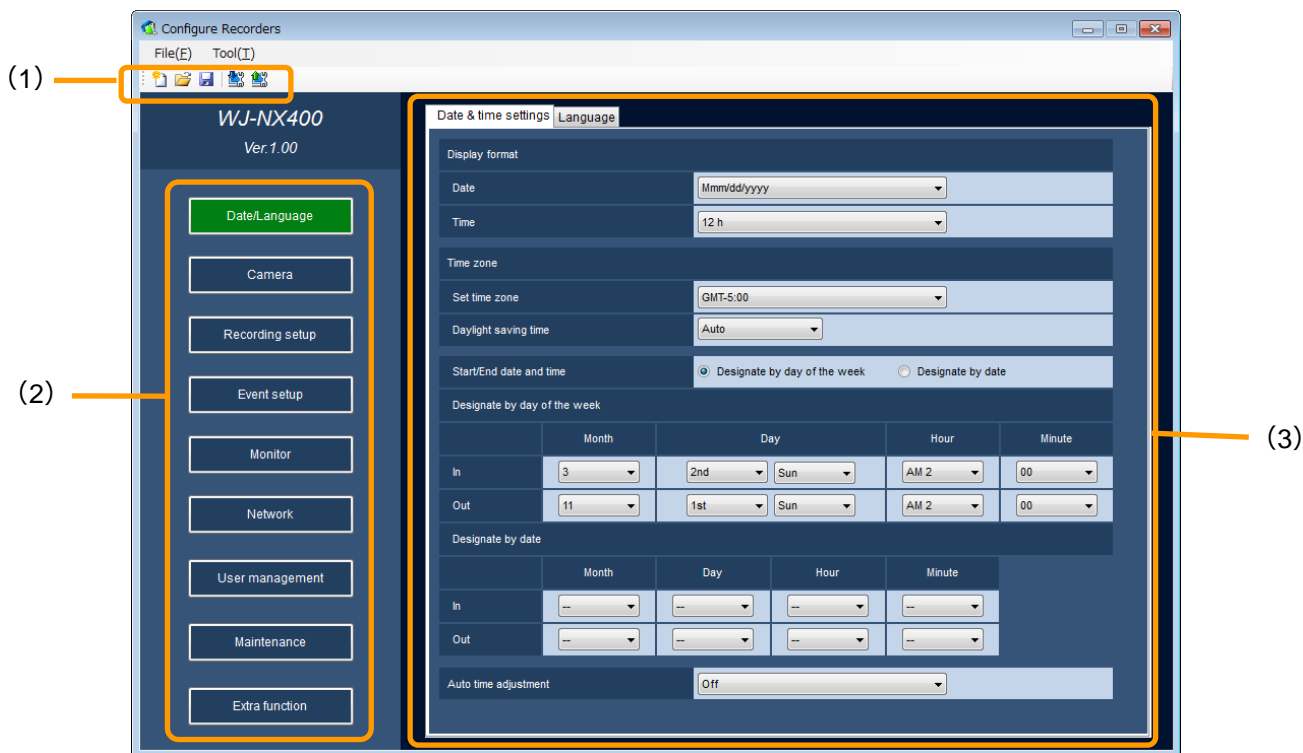
To convert Recorder Configuration File (*.bin) into text (*.csv) by press icon, selecting Model and Language, target file (*.bin) and press [OK].





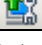
[Supported Recorders]
NX400/NX200,
NV300/NV200, ND400



Recorder Configuration File editor

To select “Create / Edit Recorder Configuration File” function, “Configure Recorder” screen will be launched. The following is an example for of WJ-NX400 editor.



No.	Item	Description
(1)	Tool bar	
	New	 Create new Recorder Configuration File.
	Open	 Import an existing Recorder Configuration File.
	Save	 Export edited configuration as new Recorder Configuration File.
	Download	 To download Recorder Configuration File from the device.
	Upload	 To upload Recorder Configuration File to the device.
(2)	Menu button	Category of recorder setting items.
(3)	Settings	View and edit area of setting items.

Note:

- Refer to the operating instructions of the device in use for information about each setting item.

.....

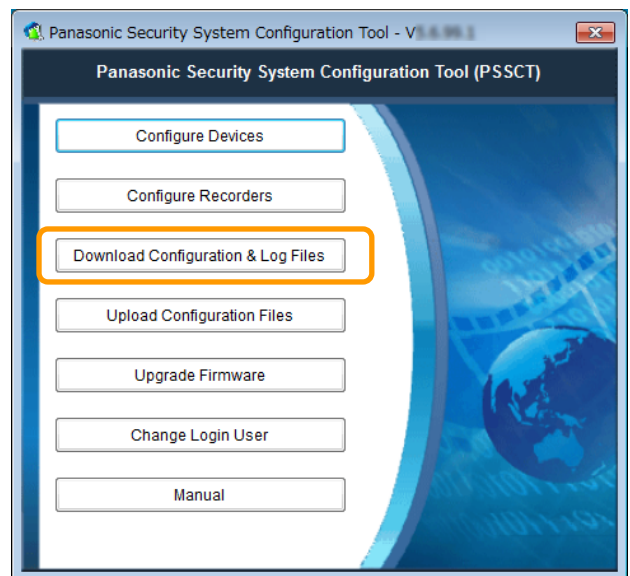
Download Configuration Files and Log Files from Devices

Important:

- Wait until the download completes.
- This software may fail to connect the device when the destination device is in operation.

1 Click [Download Configuration & Log Files] button.

The selection page will be displayed.



2 Register the device from which the settings are to be downloaded.

[Detect]

To detect devices on network to update Device Configuration List automatically. If some devices are failed to detect, please extend detect time, and then try again.



[Add]

Set the following items on the menu which appears.

- Range of IP address (Start, End)
- User name / Password
(Credential of the login to access devices)
- HTTP port number
- FTP port number
- TELNET port number



Note:

- If you can't find the device, confirm the following.
 - (1) Reboot cameras.
 - (2) Confirm the power supply, the connection to the NW switch and start-up.
 - (3) Click [Search] button

.....

3 Start downloading.

When [Start] button is clicked, the information page will be displayed. Select the download information and click [OK] button, and then downloading will start. When the operation is completed, the dialog box will be displayed.

Note:

- Click [Save] button to save the settings of the registered device.
- The saved settings (setup file) from Download Configuration & Log Files /Upload Configuration Files/ Upgrade Firmware can be opened by clicking [Open] button.

.....

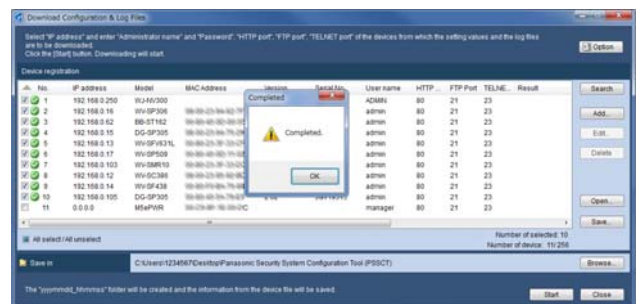
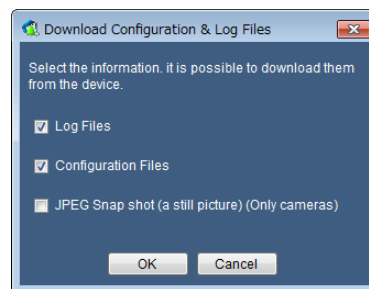
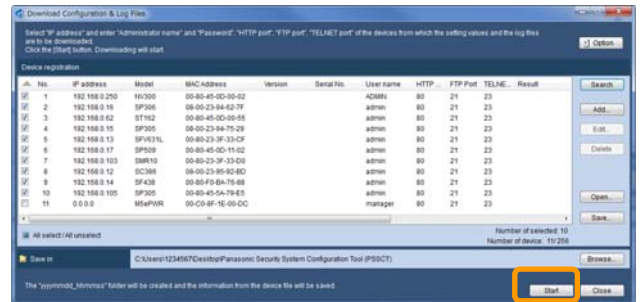
4 Complete the download.

Click [OK] button.

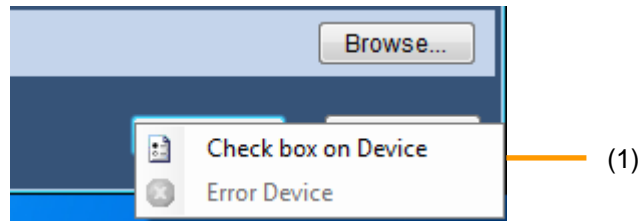
Note:

- The Log list will be saved in the downloading folder created by this software.

.....

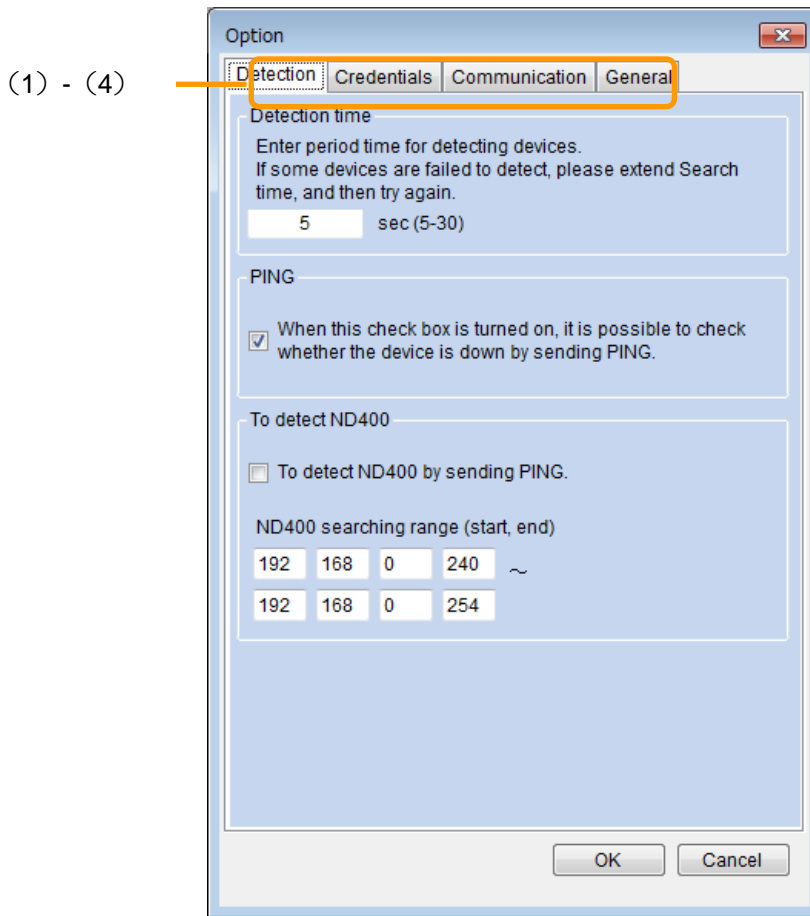


This page will be displayed when [Start] button on the device registration page is clicked. The following are descriptions about the screen and the setup items.



No.	Item	Description
(1)	Select devices	[Check box on Device] • Download from checked devices. [Error Device] • Download from failed device last time.

Option Settings

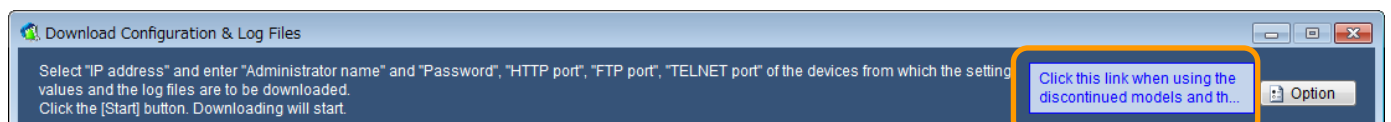


No.	Item	Description
(1)	Detection	<ul style="list-style-type: none"> • Period of "Detection time" to detect devices • Control for "PING before access devices" • Configuration of ND400 detection
(2)	Credentials	Credential of login to each device. (“User name” and “Password” for Administrators of related devices.)
(3)	Communication	<ul style="list-style-type: none"> • Number of Operations In case of failure to communicate devices for the reason of lack of bandwidth, decrease this number. • Network Adapter Selection
(4)	General	Language Settings. (Settings will be reflected after the next startup.)

Note:

- Click this following button to use the old version of this software when using the discontinued models and the old devices.

.....

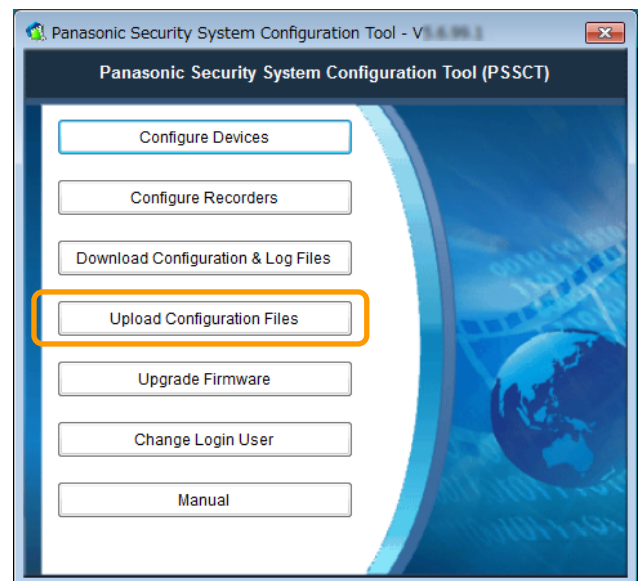


Upload Configuration Files to Devices

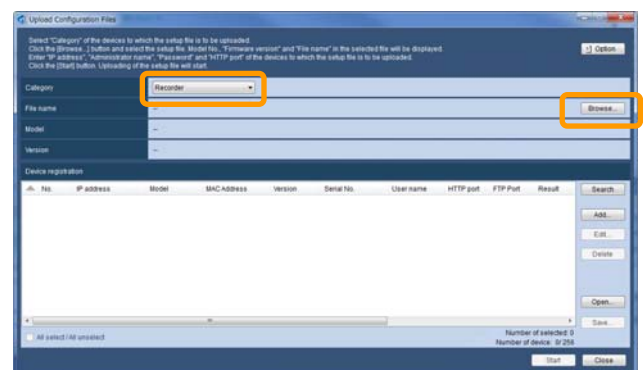
Important:

- Wait for a while until the upload completes.
- When the saved setup file is edited such by text edit software, uploading it to the device will become impossible.
- Do not access concurrently to the same device from multiple PCs using this software. Otherwise, device errors may occur.
- It is impossible to upload the setup file when the destination device is in operation.

- 1 **Click [Upload Configuration Files] button.**
The selection page will be displayed.



- 2 **Display information of the setup file**
Click [Browse...] button after selecting "Category" of the device to which the setup file is to be uploaded.
Select the setup file on the "Open file" page.
The file name, model number and version of the selected setup file will be displayed.



Note:

When uploading the configuration files, select the file according to the devices. Refer to the provided "Available function list for each compatible device (PDF file)" about the selecting files.

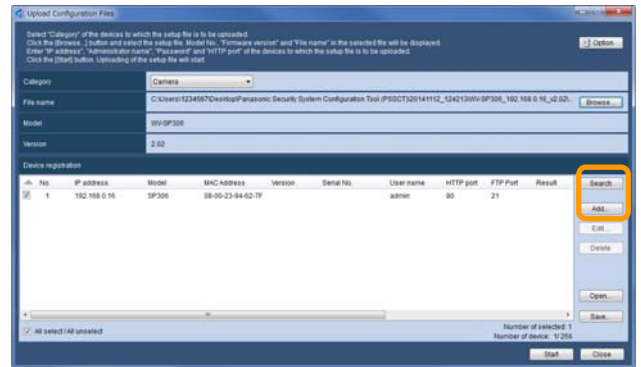
3 Register the device to which the settings are to be uploaded.

Please refer to [Download Configuration & Log Files].

Note:

- *1 To upload the downloaded file to the other camera, the following steps is recommend:
The same Administrator User name & Password are set to each camera.

.....



4 Start uploading

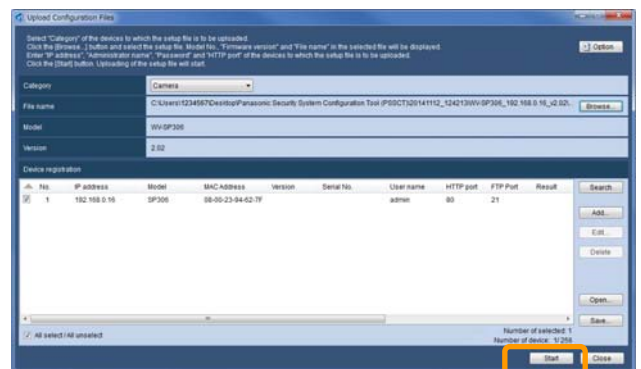
Click [Start] button to start uploading.

When the upload of the settings is completed, the dialog box will be displayed.

Note:

- Click [Save] button to save information of the registered device.
- The saved settings (setup file) from Download Configuration & Log Files /Upload Configuration Files/ Upgrade Firmware can be opened by clicking [Open] button.

.....



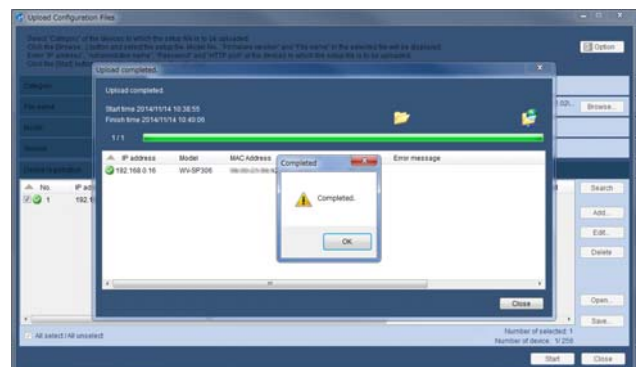
5 Complete the upload.

Click [OK] button.

Note:

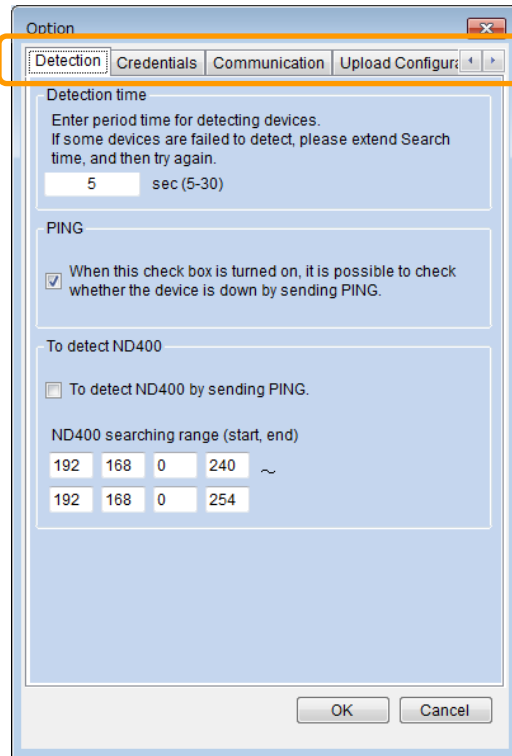
- The Log list will be saved in the "Desktop\Panasonic Security System Configuration Tool (PSSCT)\yyyyymmdd_hhmmss" folder created by this software.

.....



Option Settings

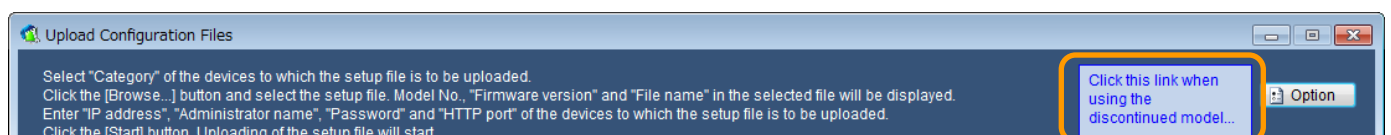
(1) - (5)



No.	Item	Description
(1)	Detection	<ul style="list-style-type: none"> • Period of "Detection time" to detect devices • Control for "PING before access devices" • Configuration of ND400 detection
(2)	Credentials	Credential of login to each device. (“User name” and “Password” for Administrators of related devices.)
(3)	Communication	<ul style="list-style-type: none"> • Number of Operations In case of failure to communicate devices for the reason of lack of bandwidth, decrease this number. • Network Adapter Selection
(4)	Upload Configuration Files	The Option relating to Upload Configuration Files
(5)	General	Language Settings. (Settings will be reflected after the next startup.)

Note:

- Click this following button to use the old version of this software when using the discontinued models and the old devices.



Upgrade Firmware

Important:

- Wait until the software firmware completes.
- When designating the directory to save the upgrade firmware, enter 1-byte alphanumeric characters.
- Do not access concurrently to the same device from multiple PCs using this software. Otherwise, device errors may occur.
- It is impossible to upgrade the firmware when the device is in operation.
- Make sure that the file used for the firmware upgrade is designated file.

- 1 **Click [Upgrade Firmware] button.**
The selection page will be displayed.

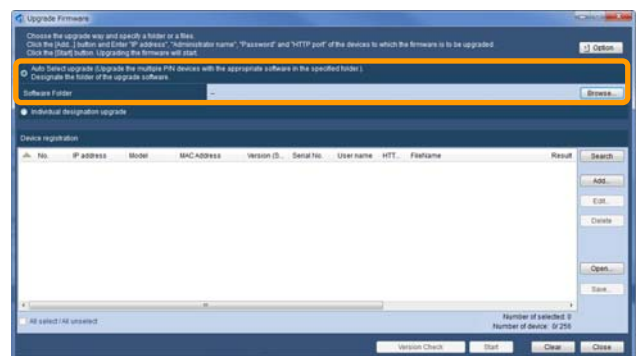


- 2 **Choose the upgrade way.**
 - When "Auto Select upgrade" is selected. Click [Browse...] button. Select the folder in which the update software is stored on the "Browse For Folder" page.

Important:

- When upgrading Application software (extension: img) and Camera Driver software (extension: bin) at the same time by using this function, do not change the folder and file name which extract the downloaded ZIP file from Panasonic site.

.....

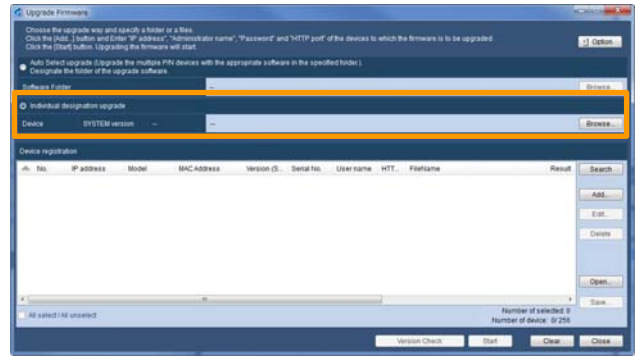


Important:.....

- It is possible to run Two-step Upgrade Firmware *1 automatically when using this function. Do not change the folder and file name which extract the downloaded ZIP file from Panasonic site.

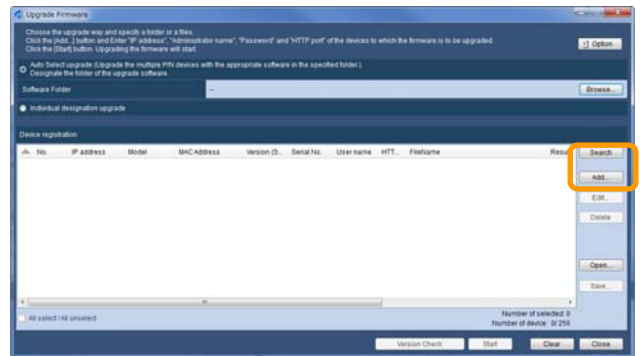
1 SW55/SP50*/SF54*/SF53* Series : When upgrading from the older version(V1.30) to after V1.40
 SF448/SW45*/SF43* Series : When upgrading from the older version(V1.04) to after V1.40

- When "Individual designation upgrade" is selected.
 Click [Browse...] button.
 Select the software on the "Open file" page.
 The file name, model number and version of the selected software will be displayed.



3 Register the device of which the firmware is to be upgraded.

Please refer to [Download Configuration & Log Files].

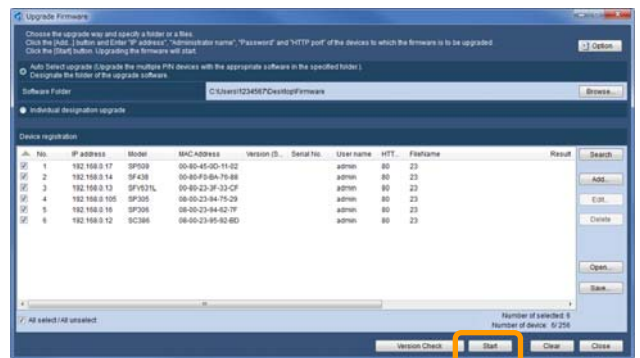


4 Start updating the software

Click [Start] button to start updating the software. When the upgrade of the firmware is completed, the dialog box will be displayed.

Note:

- Click [Version Check] button to get information of the registered device and display the list.
- Click [Save] button to save information of the registered device.
- The saved settings (setup file) from Download Configuration & Log Files /Upload Configuration Files/ Upgrade Firmware can be opened by clicking [Open] button.



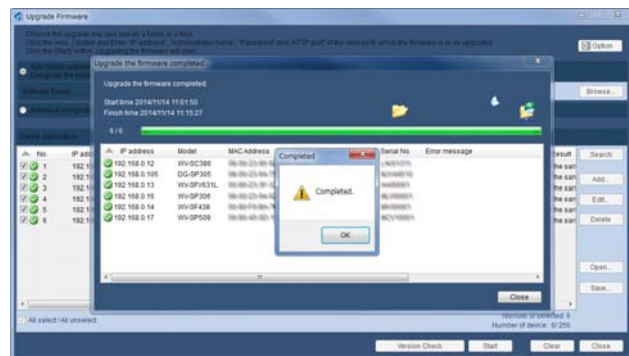
5 Complete the firmware upgrade.

Click [OK] button.

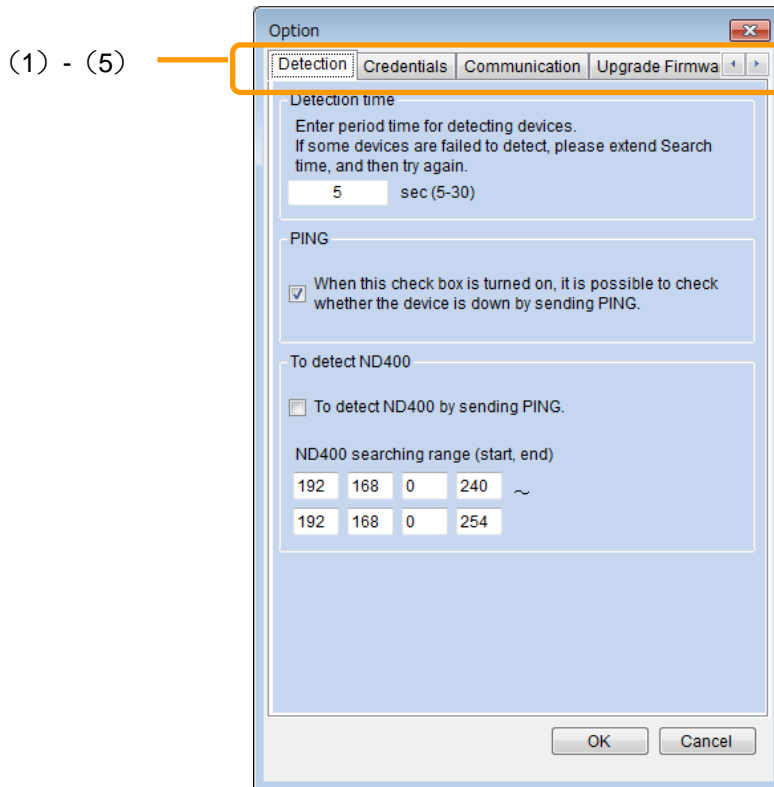
Note:

- The Log list will be saved in the "Desktop\Panasonic Security System Configuration Tool (PSSCT)\yyyyymmdd_hhmmss" folder created by this software.

.....



Option Settings

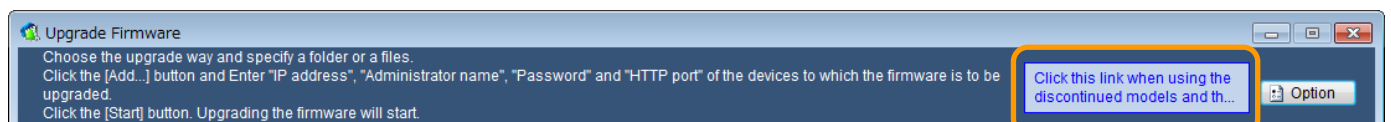


No.	Item	Description
(1)	Detection	<ul style="list-style-type: none"> • Period of "Detection time" to detect devices • Control for "PING before access devices" • Configuration of ND400 detection
(2)	Credentials	Credential of login to each device. (“User name” and “Password” for Administrators of related devices.)
(3)	Communication	<ul style="list-style-type: none"> • Number of Operations In case of failure to communicate devices for the reason of lack of bandwidth, decrease this number. • Network Adapter Selection
(4)	Upgrade Firmware	Control for relating Upgrade Firmware.
(5)	General	Language Settings. (Settings will be reflected after the next startup.)

Note:

- Click this following button to use the old version of this software when using the discontinued models and the old devices.

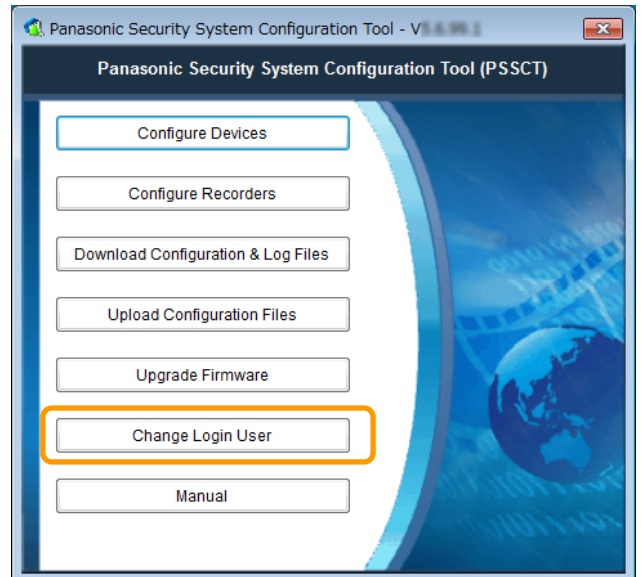
.....



Change Login User

Change the user name and password required for login.

- 1 **Click [Change Login User] button.**
The user edit page will be displayed.

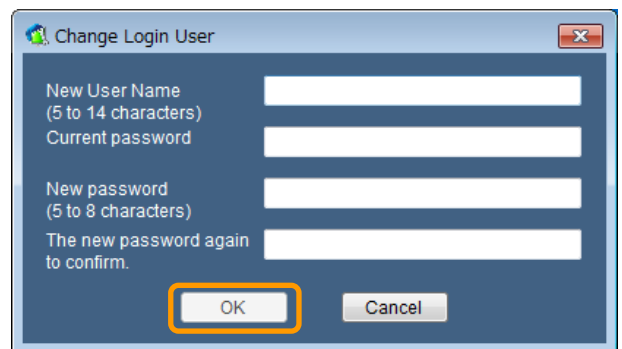


- 2 **Change the user name and password.**
Click [OK] button after completing the fields of "New user name", "Current password", "New password" and "Retype new password".

Note:

- Enter 5 - 14 alphanumeric characters for "User name".
- Enter 5 - 8 alphanumeric characters for "Password".
- Do not use marks (symbols) for "User name" and "Password".

.....



Refer to the Manual

1 Click [Manual] button.

This manual and “Available function list for each compatible device (PDF file)” will be displayed.

Note:

- Select "PSSCT2" from "start" menu ("start" - "All Programs" - "Panasonic" - " Panasonic Security System Configuration Tool (PSSCT2)" - "Panasonic Security System Configuration Tool (PSSCT2)"). This manual will be displayed.

.....



Other

Troubleshooting

Check the following before requesting repair.

Symptom	Cause / solution	Page
<p>Cannot access the device from this software.</p>	<p>▶ Confirm that the network cable is properly connected. Confirm the indicator of the device.</p>	<p>—</p>
	<p>▶ Is the connection indicator of the device lit? In case it is not lit, IP connection is not established or a network is not working correctly. Confirm that the connection indicator of the 10BASE-T/100BASE-TX port is lit. Refer to a system administrator if it is not lit.</p>	<p>—</p>
	<p>▶ Is the valid IP address set? Refer to a system administrator for further information.</p>	<p>—</p>
	<p>▶ Are you accessing the wrong IP address? Check the connection as follows: >ping "IP address of the device" If there is reply from the device, the connection is normal. If not, check the settings of the IP address and the subnet mask.</p>	<p>—</p>
	<p>▶ Is the same IP address provided to other devices? Refer to a system administrator for further information.</p>	<p>—</p>
	<p>▶ Are there contradictions between the address and the network subnet to be accessed? When the device and the client (PC) are on the same subnet, is the same subnet set for the IP addresses of the device and the PC? Is "Use Proxy Server" for the settings of the browser checked? When accessing the device in the same subnet, entering the address of the device in the "Don't Use Proxy For These Addresses" box is recommended.</p>	<p>—</p>

Symptom	Cause / solution	Page
<p>Cannot detect the device or configure the IP address.</p>	<p>Have 20 minutes passed after turning on the power of the device? For security enhancement, the MAC address/IP address of the device will disappear and configuration of the settings will become unavailable when 20 minutes have passed after turning on the power of it.</p> <p>▶ (1)Reboot the device. (2)Confirm the power supply, the connection to the NW switch and start-up. (3)Click [Start] or [Refresh] button.</p> <p>Refer to the setup instructions of the device for information on how to reboot it.</p>	—
	<p>▶ The firewall function of the anti-virus software may be filtering the port of the camera. Allow access to all UDP and HTTP ports.</p>	—
	<p>▶ Are the incompatible devices (no camera, recorder, switch and operation PC) connected in the same subnet? Remove the incompatible devices from the same subnet.</p>	—
	<p>▶ The connected Ethernet cable may be defective. Exchange it for the others.</p>	—
	<p>When the DHCP server is not found and camera's "Network Settings" is selected, the IP address may not be configured. Please run the DHCP server or change the mode.</p>	—
	<p>▶ When the same Network Information was set, an error message may be displayed. It is shown that the message does not have changes. Please continue a job.</p>	—

Symptom	Cause / solution	Page
<p>Fail to log in.</p>	<p>▶ Is the correct password entered? Confirm that the correct password is entered. When reinstalling this software, reinstall after confirming the software is uninstalled.</p>	<p>—</p>
<p>The installer is launched when starting this software. The message saying that it is necessary to reinstall the software is displayed.</p>	<p>▶ It may be possible that the files copied onto the PC upon the installation are deleted, moved or edited. Reinstall by following the displayed instructions or uninstall the software and install it again.</p>	<p>—</p>

Cautions when using the software

The following phenomena may occur when using this software on Windows. If it occurs, follow the provided instructions below. Note that the operation shall be made by an administrator.

The following instructions are tested and confirmed. However, note that a phenomenon may not be exactly the same as described according to the PC environment, OS, etc.

The following are the instructions and restrictions for each phenomenon.

<Phenomena 1>

The software page is not displayed correctly after starting the software.(See the diagram below)



Solution

Confirm "Control Panel" – "Display". When "Smaller – 100%" is not selected, set the font size to "Smaller – 100%".

- 1 **Click "Control Panel" – "Display".**
Display page will be displayed.
- 2 **Select the font size "Smaller – 100%".**

For U.S. and Canada:

Panasonic System Communications Company of North America,

Unit of Panasonic Corporation of North America

www.panasonic.com/business/

For customer support, call 1.800.528.6747

Two Riverfront Plaza, Newark, NJ 07102-5490

Panasonic Canada Inc.

5770 Ambler Drive, Mississauga, Ontario, L4W 2T3 Canada

(905)624-5010

www.panasonic.ca

For Europe and other fields:

Panasonic Corporation

<http://www.panasonic.com>

Panasonic Corporation

Osaka, Japan

Authorized Representative in EU:

Panasonic Testing Centre

Panasonic Marketing Europe GmbH

Winsbergring 15, 22525 Hamburg, Germany