

HD IR Vari-Focal Fixed Network Camera

Quick Start Guide

Model No. **K-EW114L01E**

Welcome

Thank you for purchasing our network camera!

This quick start guide is designed to be a reference tool for your system.

Please keep this start guide well for future reference.

Please open the accessory bag to check the items one by one in accordance with the list below.

Contact your local retailer ASAP if something is missing or damaged in the bag.

Before your operation please read the following instructions carefully.

1 . Electrical safety

All installation and operation here should conform to your local electrical safety codes.

The power shall conform to the requirement in the SELV (Safety Extra Low Voltage) and the Limited power source is rated 12V DC or 24V AC in the IEC60950-1. (Refer to general introduction) **Please note: Do not connect two power supplying sources to the device at the same time; it may result in device damage!**

We assume no liability or responsibility for all the fires or electrical shock caused by improper handling or installation.

We are not liable for any problems caused by unauthorized modification or attempted repair.

2 . Transportation security

Heavy stress, violent vibration or water splash are not allowed during transportation, storage and installation.

3 . Installation

Do not apply power to the camera before completing installation.

Please install the proper power cut-off device during the installation connection.

Always follow the instruction guide the manufacturer recommended.

4 . Qualified engineers needed

All the examination and repair work should be done by the qualified service engineers.

We are not liable for any problems caused by unauthorized modifications or attempted repair.

5 . Environment

This series network camera should be installed in a cool, dry place away from direct sunlight, inflammable, explosive substances and etc.

Please keep it away from the electromagnetic radiation object and environment.

Please make sure the CCD (CMOS) component is out of the radiation of the laser beam device.

Otherwise it may result in CCD (CMOS) optical component damage.

Please keep the sound ventilation.

Do not allow the water and other liquid falling into the camera.

Thunder-proof device is recommended to be adopted to better prevent thunder.

The grounding studs of the product are recommended to be grounded to further enhance the reliability of the camera.

6. Daily Maintenance

Please shut down the device and then unplug the power cable before you begin daily maintenance work.

Do not touch the CCD (CMOS) optic component. You can use the blower to clean the dust on the lens surface.

Always use the dry soft cloth to clean the device. If there is too much dust, please use the water to dilute the mild detergent first and then use it to clean the device. Finally use the dry cloth to clean the device.

Please put the dustproof cap to protect the CCD (CMOS) component when you do not use the camera. Dome enclosure is the optical component, do not touch the enclosure when you are installing the device or clean the enclosure when you are doing maintenance work. Please use professional optical clean method to clean the enclosure. Improper enclosure clean method (such as use cloth) may result in poor IR effect of camera with IR function.

7. Accessories

Be sure to use all the accessories recommended by manufacturer.

Before installation, please open the package and check all the components are included.

Contact your local retailer ASAP if something is broken in your package.

| Accessory Name | Amount |
|----------------------------|--------|
| Network Camera Unit | 1 |
| Quick Start Guide | 1 |
| Installation Accessory Bag | 1 |
| CD | 1 |

Table of Contents

| | | |
|-----|-------------------------------|---|
| 1 | Framework..... | 1 |
| 1.1 | Device External Cable | 1 |
| 1.2 | Framework and Dimension..... | 2 |
| 2 | Device Installation | 3 |
| 3 | Quick Configuration Tool..... | 5 |
| 3.1 | Overview | 5 |
| 3.2 | Operation | 5 |
| 4 | Web Operation | 7 |
| 4.1 | Network Connection..... | 7 |
| 4.2 | Login and Main Interface..... | 7 |

1 Framework

1.1 Device External Cable

You can refer to the following figure for device external cable information. See Figure 1-1.

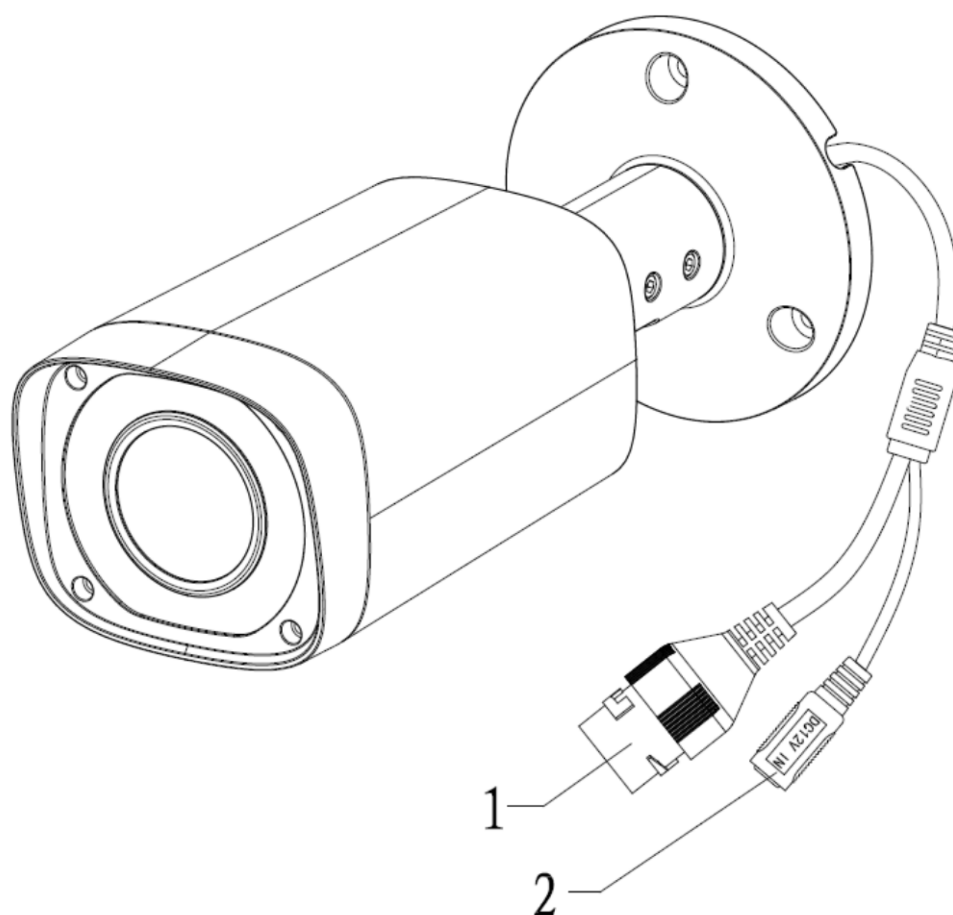


Figure 1-1

Please refer to the following sheet for detailed information.

| SN | Port | Port Name | Connection | Note |
|----|--------|------------------|---------------|--|
| 1 | LAN | Network port | Ethernet port | Connect to standard Ethernet cable. Note: Before making crystal head, pull the anti-dust cover (default), waterproof cover (optional) through network cable. |
| 2 | DC 12V | Power input port | - | Power port. Input DC 12V. |

1.2 Framework and Dimension

Please refer to the following figure for dimension information. The unit is mm. See Figure 1-2 and Figure 1-3.

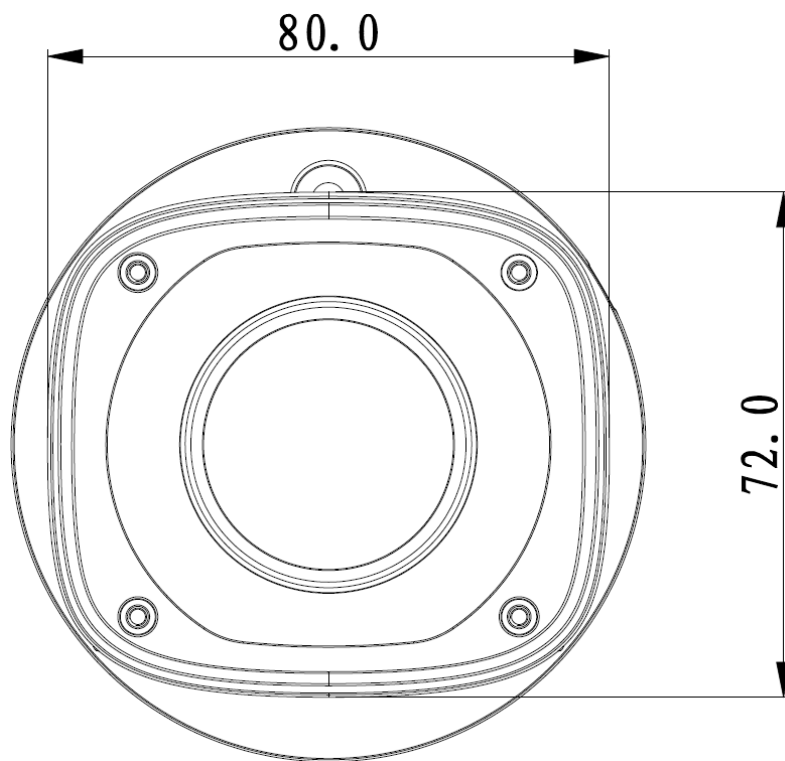


Figure 1-2 Dimension illustration 1

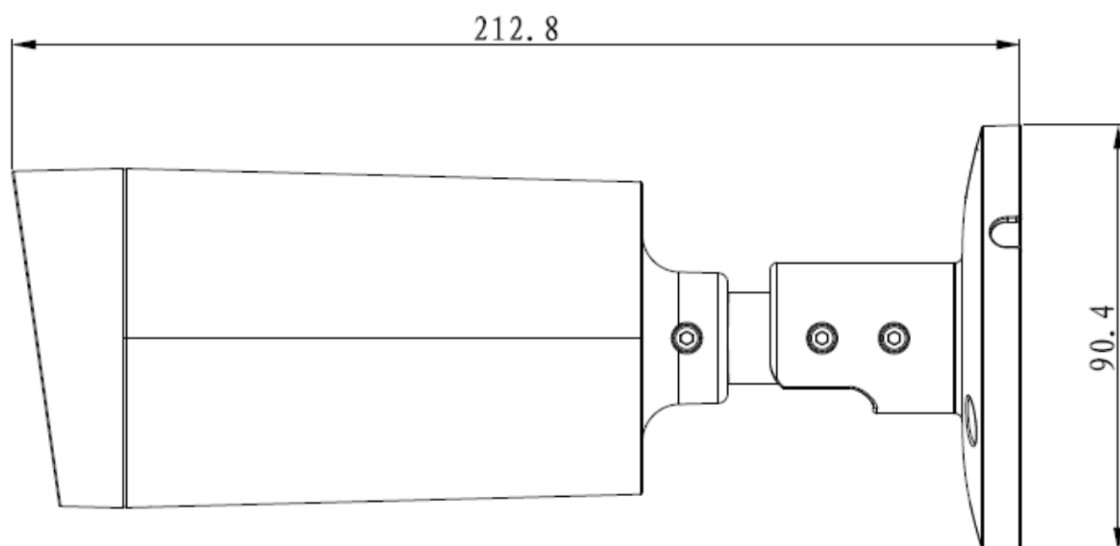


Figure 1-3 Dimension illustration 2

2 Device Installation

Important

- Make sure that the installation area is strong enough to hold the product, such as a concrete ceiling.
- Install the camera in the foundation area of the architecture or where sufficient strength is assured.
- If a wall or ceiling board such as plasterboard is too weak to support the total weight, the area shall be sufficiently reinforced.

Please see Figure 3-1 and Figure 3-2.

Step 1

Open accessories bag, take out installation position map and stick it to designated surface where you will install the device (wall or ceiling).

Step 2

Dig a hole according to position of hole on installation position map.

Step 3

Remove the installation template label and attach the camera with 3 screws (locally procured).

Step 4

Plug external wiring of the device properly.

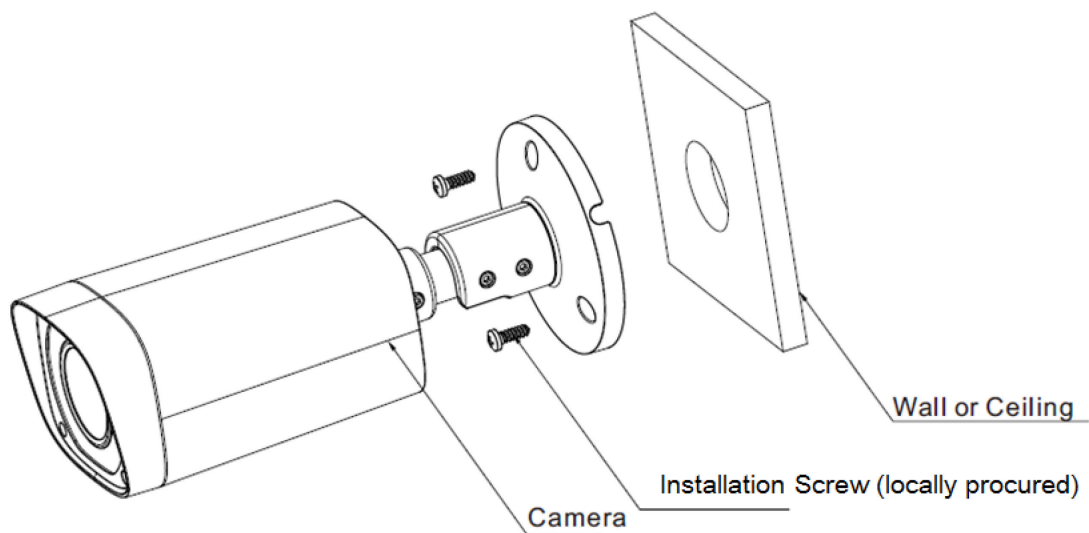


Figure 2-1

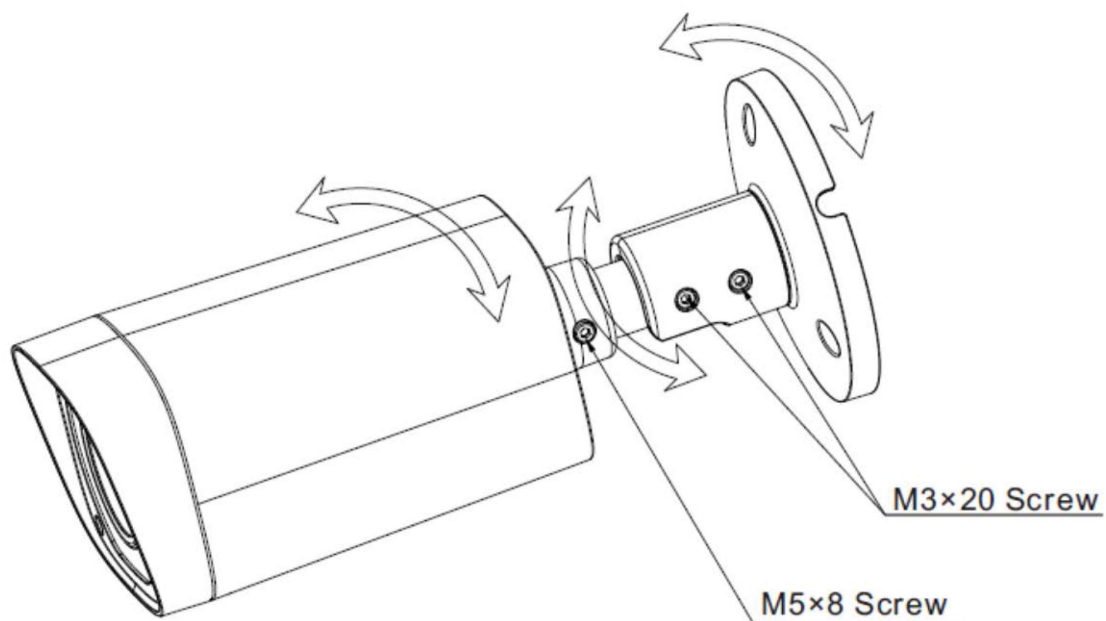


Figure 2-2

Step 5

Use inner hex screwdriver to loosen adjusting screw shown in Figure 2-2.

Step 6

Adjust the device in all possible directions, and set its monitoring direction. Then, please adjust the viewing angle and focus.

Notes:

- Viewing angle and focus adjustments shall be performed together with camera angle adjustment.
- Refer to the operation manual (included in the CD-ROM) for how to perform the zoom and focus settings from system menu.

3 Quick Configuration Tool

3.1 Overview

Quick configuration tool can search current IP address, modify IP address. At the same time, you can use it to upgrade the device.

Please note the tool only applies to the IP addresses in the same segment.

3.2 Operation

Step 1

Double click the “ConfigTools.exe” icon; you can see an interface is shown as in Figure 3-1.

In the device list interface, you can view device IP address, port number, subnet mask, default gateway, MAC address and etc.

Step 2

Select one IP address and then right click mouse, you can see an interface is shown as in Figure 3-2. Select the “Open Device Web” item; you can go to the corresponding web login interface.

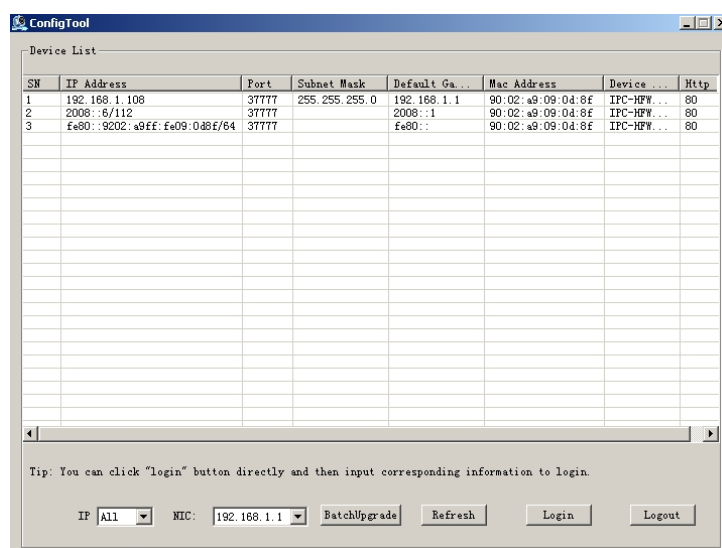


Figure 3-1 Search interface

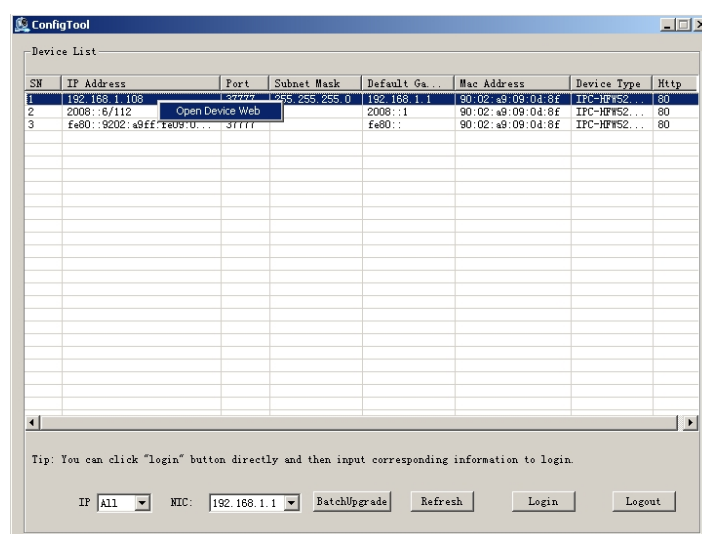


Figure 3-2 Search interface 2

Step 3

If you want to modify the device IP address without logging in the device web interface, you can go to the configuration tool main interface to set.

In the configuration tool search interface (Figure 3-1), please select a device IP address and then double click it to open the login interface. Or you can select an IP address and then click the Login button to go to the login interface. See Figure 3-3.

In Figure 3-3, you can view device IP address, user name, password and port. Please modify the corresponding information to login.

Please note the port information here shall be identical with the port value you set in TCP port in Web Network interface. Otherwise, you cannot login the device.

If you are using device background upgrade port 3800 to login, other setups are all invalid.

After you logged in, the configuration tool main interface is shown as below. See Figure 3-4.

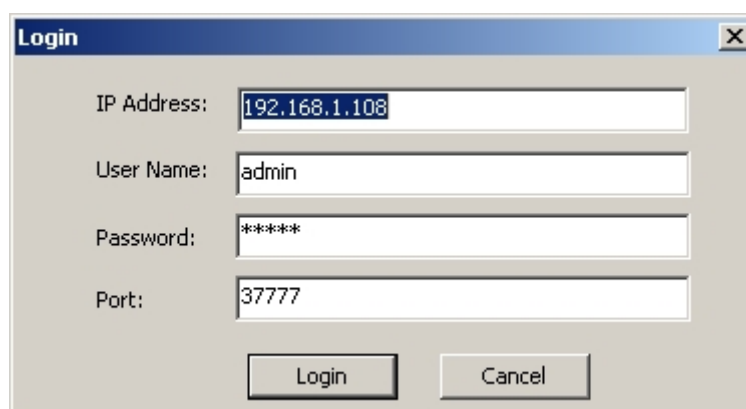
A screenshot of a 'Login' dialog box. It has a title bar with 'Login' and a close button. Inside, there are four input fields: 'IP Address' with '192.168.1.108', 'User Name' with 'admin', 'Password' with '*****', and 'Port' with '37777'. At the bottom are 'Login' and 'Cancel' buttons.

Figure 3-3 Login prompt

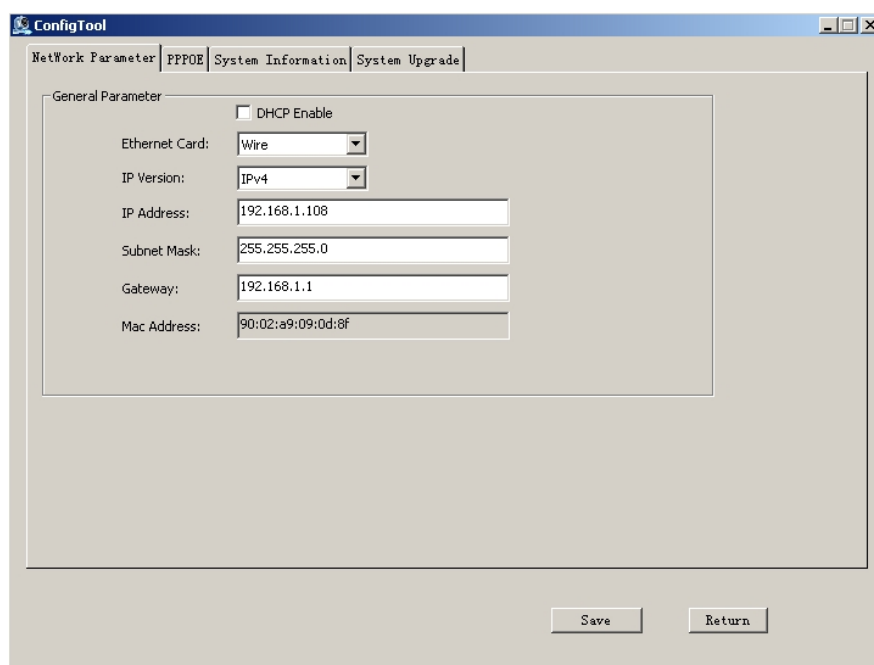
A screenshot of the 'ConfigTool' main interface. The title bar says 'ConfigTool'. There are four tabs: 'NetWork Parameter', 'PPPOE', 'System Information', and 'System Upgrade'. The 'NetWork Parameter' tab is active, showing a 'General Parameter' section. It includes a 'DHCP Enable' checkbox (unchecked), 'Ethernet Card' (Wire), 'IP Version' (IPv4), 'IP Address' (192.168.1.108), 'Subnet Mask' (255.255.255.0), 'Gateway' (192.168.1.1), and 'Mac Address' (90:02:a9:09:0d:8f). At the bottom are 'Save' and 'Return' buttons.

Figure 3-4 Main interface

For detailed information and operation instruction of the quick configuration tool, please refer to the *Quick Configuration Tool User's Manual* included in the resources CD.

4 Web Operation

This series network camera products support the Web access and management via PC. Web includes several modules: Monitor channel preview, system configuration, alarm and etc.

4.1 Network Connection

Please follow the steps listed below for network connection.

- Make sure the network camera has connected to the network properly.
- Please set the IP address, subnet mask and gateway of the PC and the network camera respectively. Network camera default IP address is 192.168.0.10. Subnet mask is 255.255.255.0. Gateway is 192.168.0.1
- Use order ping `***.***.***.***`(* network camera address) to check connection is OK or not.

4.2 Login and Main Interface

Open IE and input network camera address in the address bar. See Figure 4- 1.

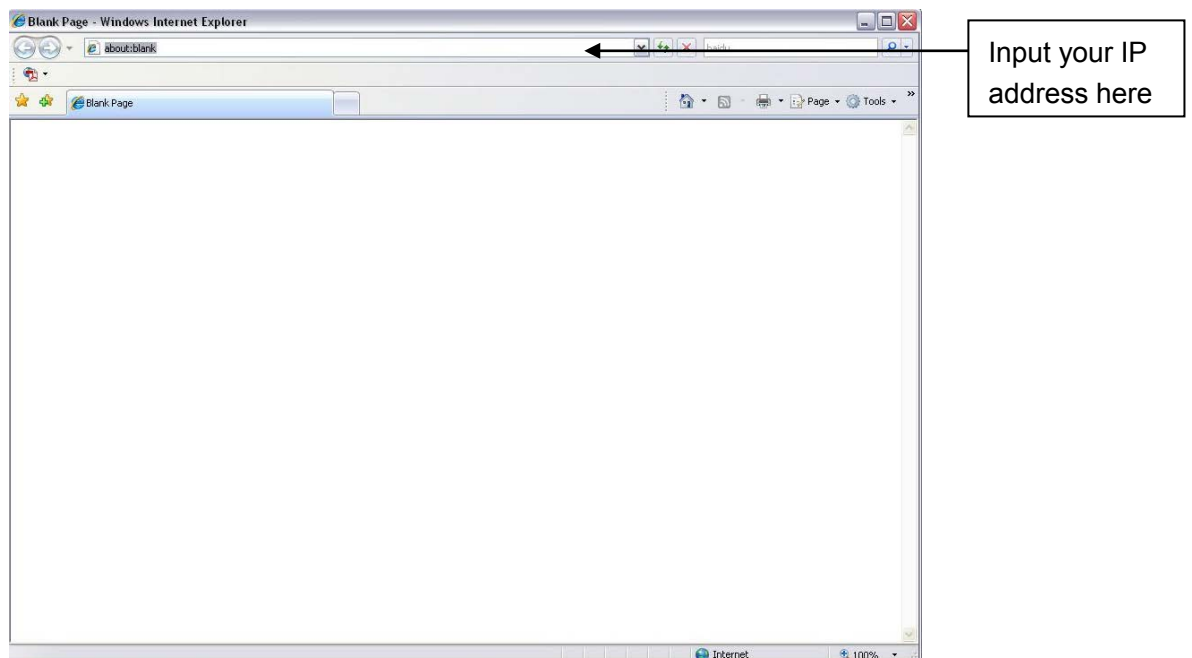


Figure 4- 1 IP address

The login interface is shown as below. See Figure 4- 2.

Please input your user name and password.

Default factory name(ID) is admin and password(PWD) is 12345.

Note: For security reasons, please modify your password after you first login.

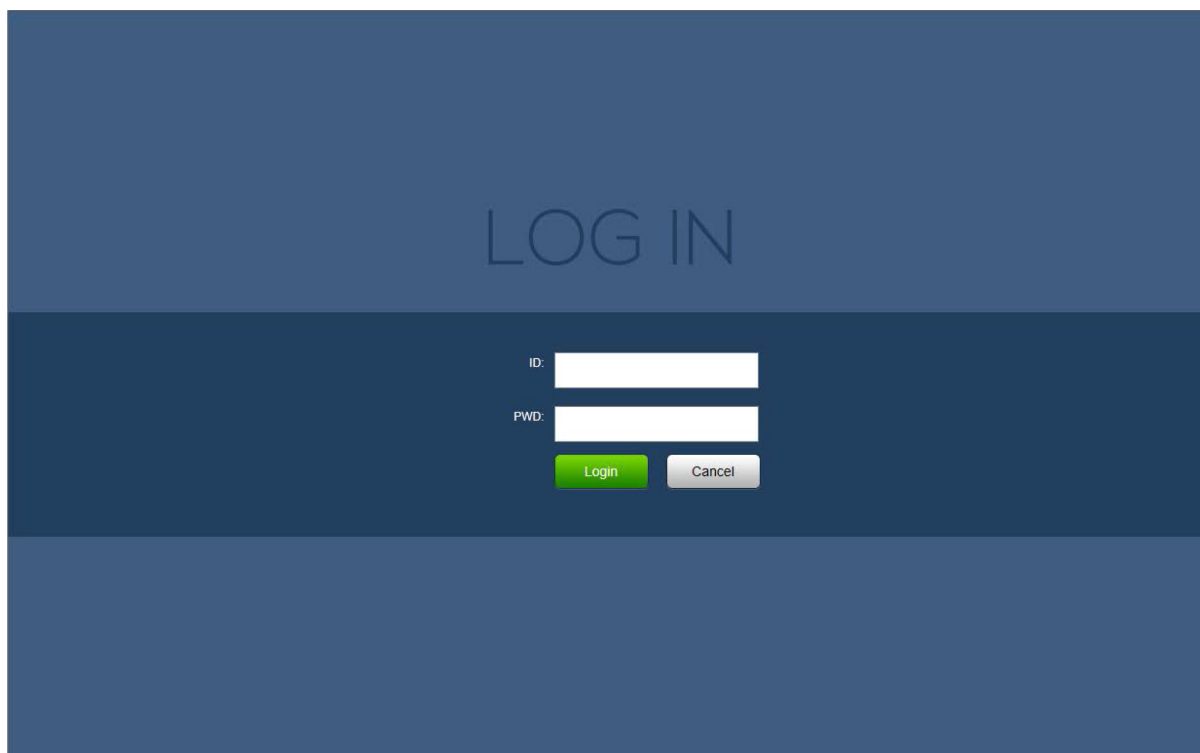


Figure 4- 2 Web login

If it is your first time to log in, system pops up warning information to ask you whether install web plug-in or not after you logged in for one minute. For detailed plug-in installation, please refer to the Web Operation Manual included in the resource CD.

After you logged in, you can see the main window.

Please refer to the Web Operation Manual included in the resource CD for detailed operation instruction.

Note:

- **This quick start guide is for reference only. Slight difference may be found in user interface.**
- **All the designs and software here are subject to change without prior written notice.**
- **If there is any uncertainty or controversy, please refer to the final explanation of us.**
- **Please visit our website or contact your local service engineer for more information.**